



PATHWAY TO GREAT

Welcome to a new academic year at West London College! Let's make this year great together! Some events you might be interested in...

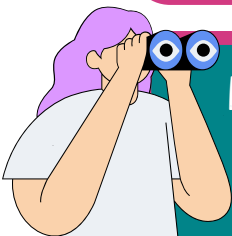


KEY TO SUCCESS

- **Punctuality** and **Attendance** will have a big impact on your course.
- Being **respectful** and having a **positive attitude**.
- Not hats or hoodies are allowed whilst on campus. Religious head ware is allowed.
- Your lanyard (ID card) must be worn and visible at all times.

When you show up, your grades go up.

EVENTS DATES



College Wide
Induction
September 5th & 6th



College Wide
Free Breakfast
September 9th



College Wide
Freshers' Fair
Hammersmith - 10th
Southall - 11th
Ealing - 12th
12:00 PM to 2:00 PM



International
Peace Day
September 21st



DID YOU KNOW?

Our college website is available in multiple languages!
Just choose your language from the menu and explore with ease.

QUICKLINKS



Drive



Gmail



Classroom



Skillbuilder

AI'S ROLE IN LEARNING

AI tools like ChatGPT and Snapchat My AI can help with generating text, art, and music, but it's important to use them correctly in assessments. Misuse is considered cheating.

HOW TO USE AI CORRECTLY



Know the rules -

- You cannot use AI tools during exams.
- Your teacher will tell you if AI tools are allowed for coursework. Even if allowed, your marks come from your own understanding, not just AI content.



Reference AI clearly -

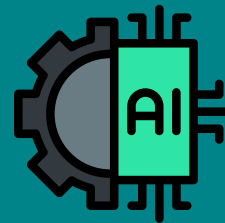
- Name the AI tool you used.
- Include the date and explain how you used it.
- Save screenshots of questions you asked and answers you received.



Declare your own work -

- When submitting work, sign the declaration only after ensuring all AI content is properly referenced.

! Important Reminder: If you misuse AI by submitting its output as your own, you risk losing marks or being disqualified.



BRITISH VALUES

01. Democracy

Participation in the democratic process.

02. Rule of law

Following the laws that protect everyone.

03. Individual Liberty

Freedom to make personal choices.

04. Mutual Respect

Respecting everyone.

05. Faiths and Beliefs

Acceptance of all religious and backgrounds.

CONTACT INFORMATION



Tafina Davidson

Head of Learner Experience
T.davidson@wlc.ac.uk



Daniel Bristow-Bailey

Safeguarding and Attendance
d.bristow-bailey@wlc.ac.uk

SWITCHBOARD NUMBERS

Ealing Green College
020 8231 6065

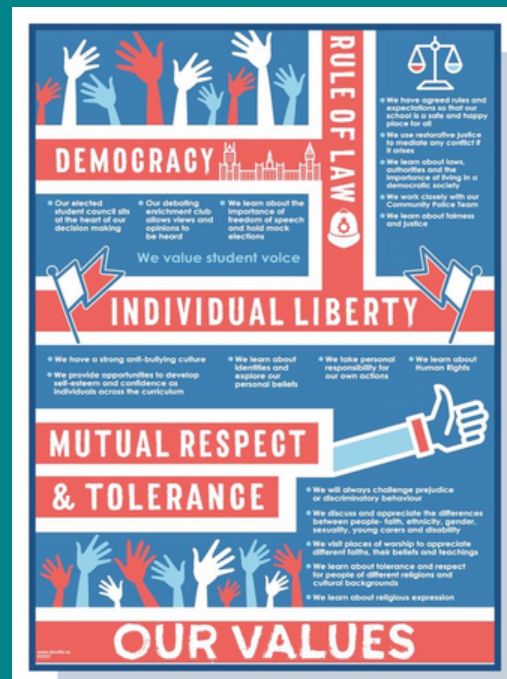
Hammersmith & Fulham College
020 7565 1293 or 020 7565 1294

Southall Community College
020 8231 6162



Maxine Collins

Additional Learning Support
m.collins@wlc.ac.uk



British Values are the core of the United Kingdom.